

**The London P&I Club
Board of Directors**

Chairman John M. Lyras Lyras Maritime Ltd., London	John L. Harbor Surrey	John J. Raggio Sealift LLC, New York	Managers Ian E. Gooch A. Bilbrough & Co. Ltd., London
Vice-Chairmen Robert A. Ho Fairmont Management Ltd., Hong Kong	John L. Lawrence London	Sophocles N. Zoullas Zenith Shipping US LLC, New York	Anthony G. Jones A. Bilbrough & Co. Ltd., London
Vassilis J. Laliotis J. Laliotis Maritime Group, Athens	Amnon Lion Eastern Pacific Shipping Pte. Ltd., Singapore		Iain Paul A. Bilbrough & Co. Ltd., London

**The London P&I Club
Members' Committee**

Chairman John M. Lyras Lyras Maritime Ltd., London	John Anagnostopoulos EPS Shipping (UK) Ltd.	John L. Lawrence London	Nikolaos Savvas Cosmoship Management SA., Piraeus
Vice-Chairmen Robert A. Ho Fairmont Management Ltd., Hong Kong	Capt. Sreeganth Bangaroo Raffles Shipmanagement Services Pte Ltd., Singapore	Michael C Lemos C M Lemos & Co Ltd., London	Josef Sedlmeyr Northern Shipping Holding, Munich
Vassilis J. Laliotis J. Laliotis Maritime Group, Athens	Stamos J. Fafalios Fafalios Ltd., London	Amnon Lion Eastern Pacific Shipping Pte Ltd., Singapore	Giangiacoimo Serena SAM International Andromeda Shipping, Monaco
	John L. Harbor Surrey	Zahid Osman MISC Berhad, Kuala Lumpur	Zhongyi (John) Su Erasmus Shipinvest Group Ltd., Athens
	Wenguang Ji SITC Shipping Group, Shanghai	Ismini Panagiotidi Pavimar S.A., Athens	Shen Zhao China Shipbuilding Consulting Co., Ltd., Shanghai
		Vassilis Papageorgiou Tsakos Group, Athens	Sophocles N Zoullas Zenith Shipping US LLC, New York
		John J Raggio Sealift LLC, New York	

Managers
A. Bilbrough & Co. Ltd.

London 50 Leaman Street London E1 8HQ T: +44 20 7772 8000 F: +44 20 7772 8200 E: london@londonpandi.com	Greece Ionion Building Akti Miaouli & 2, Il Merarchias Street 185 35 Piraeus T: +30 210 458 6600 F: +30 210 458 6601 E: piraeus@londonpandi.com	Hong Kong Unit 3603 36/F Citicorp Centre 18 Whitfield Road Causeway Bay Hong Kong T: +852 3761 5678 F: +852 2838 2001 E: hongkong@londonpandi.com	Cyprus Esperidon 5 4th Floor Strovolos, 2001 Nicosia T: +357 25 26 08 00 F: +357 25 26 08 02 E: cyprus@londonpandi.com	Republic of Korea <i>In association with:</i> AB Korea 17th Floor Gong-Deok Building 11 Saechang-ro Mapo-gu Seoul T: +82 2 704 7440 E: london@ab-korea.com
---	---	--	--	--



The London P&I Club is committed to providing the best possible service to our Members. Delivering high calibre, responsive and sustainable support is fundamental to the way we work. We are part of the International Group of P&I Clubs where we play a key role in coordinating and promoting the collective strength of the P&I industry on behalf of the global ship-owning community.

The London P&I Club at a glance

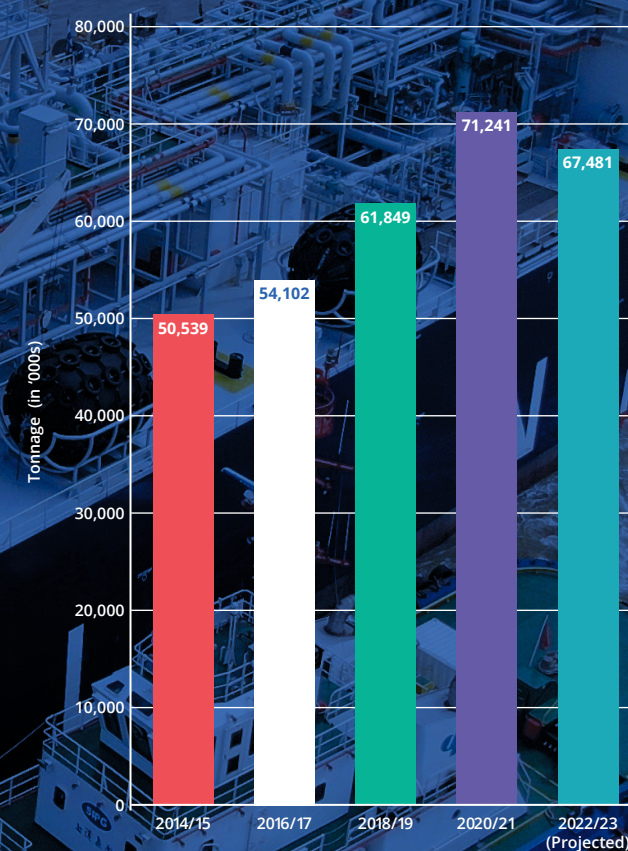
Underwriting Spotlight

- Free reserves of US\$164.0m. Capital in S&P 'AA' range
- Total entered tonnage of 67.4m gt (projected)
- We cover Owners and Charterers involved with a diverse range of ship types and trades, drawn from around the world
- Charterers' cover – flexible, comprehensive insurance with a combined single limit
- Tailored fixed premium cover for the Owners of small and medium-sized ships
- FD&D cover – our legal team provides strong support for Owners and Charterers
- War Risks cover – for H&M losses and P&I liabilities caused by acts of war and terrorism. We also offer K&R cover
- Cover for offshore, specialist risks and extended contractual liabilities
- Sustainability Policy focusing on relevant UN SDGs and including cover for Members involved in the offshore renewables sector and supporting the green transition

Quality team

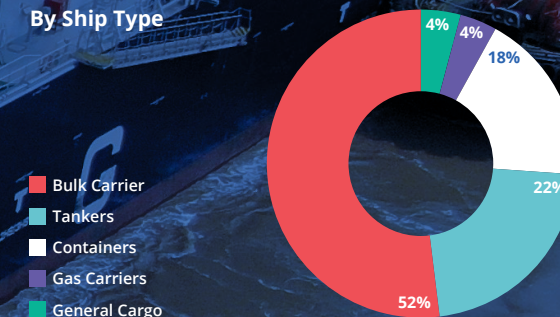
- First-class service is delivered by our ISO 9001:2015 accredited Managers, Bilbrough. Members' interests are protected by a specialised team including experienced lawyers, ex-mariners and insurance professionals.
- Loss prevention – our regular *StopLoss*, *LP Focus* and other publications, along with our Alerts system are supplemented by a programme of tailored Members' seminars.
- We are based in London, Hong Kong, Piraeus and Cyprus, and have a dedicated team in Seoul. We also have a global network of correspondents, lawyers and surveyors, ensuring our provision of a high calibre 24 hour service to our Members, wherever they are based.

DEVELOPMENT OF COMBINED ENTERED TONNAGE

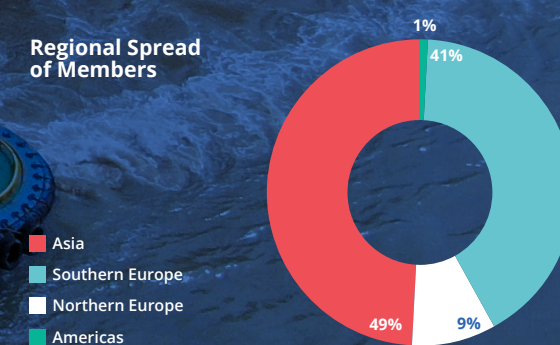


OWNED TONNAGE PROFILE 2022/23

By Ship Type



Regional Spread of Members



By Ship Age

