

# Interim threshold for intervention on vessel biofouling

MPI can take action on a vessel if it has biofouling that meets or exceeds the following thresholds that indicate severe risk:

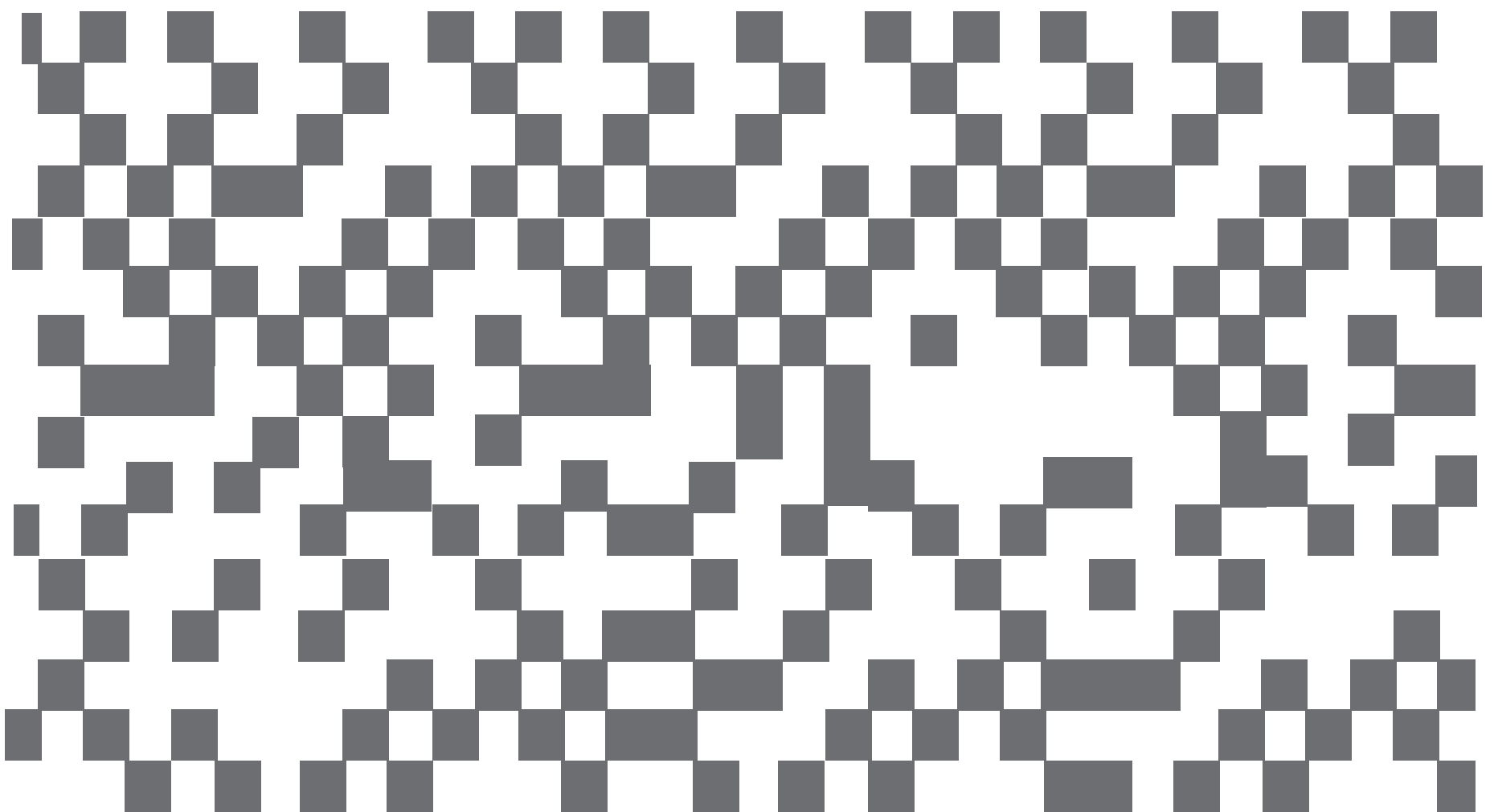
## Either:

1. The vessel has 40 percent cover of any biofouling that is not a slime layer or goose barnacles (for example, barnacles, tube worms, or bryozoans) over a continuous area on the hull (or fittings) of:
  - 1 metre<sup>2</sup> – vessels up to 20 metres in length; or
  - 4 metres<sup>2</sup> – vessels over 20 metres in length.

## Or:

2. One or more high risk organisms are present.

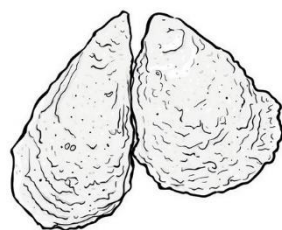
**40% cover example** – view as A3 document to see 40% cover in real scale



## High Risk Organisms are:



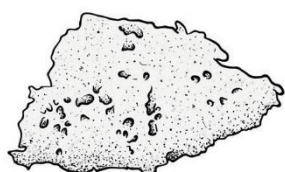
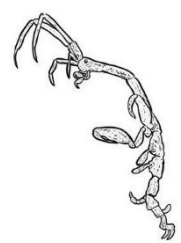
**1. Anemones**  
(can be clumps of colonial anemones)



**2. Bivalves**  
(oysters, mussels etc)



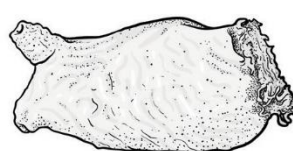
**3. Mobile crustaceans**  
(crabs, shrimps, etc)



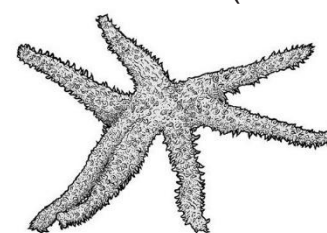
**4. Sponges**  
(various shapes)



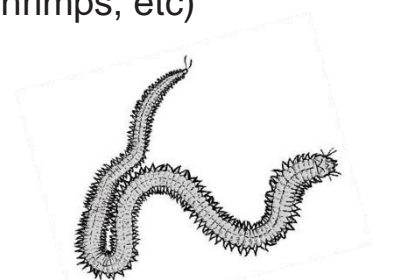
**5. Sea-snails**



**6. Sea-squirts**  
(can be clumps of colonial squirts)



**7. Sea-stars**  
(also cushions and snake stars)



**8. Marine worms**  
(not tube worms)