



April 23, 2026

Circular No.: [2026] 04

An Update on the Distribution of Major Fishery Farms along the Coast of China

Dear Sir or Madam,

This Circular is formulated to assist vessels in accurately identifying the dynamic distribution of fishery farms in Chinese waters, mitigate maritime risks caused by inadvertent entry into such areas, and further improve the accuracy and practicality of fishery farm distribution information and corresponding safety recommendations. As a supplement to our previously issued Circulars PNI [2023] 04, PNI [2023] 09, and PNI [2024] 01, this Circular updates information on fishery farms in certain waters of China and optimizes relevant navigational safety recommendations, drawing on typical case materials over the past two years, the latest notices issued by maritime authorities, and on-site survey findings.

Dalian

The number of incidents involving fishery farms in the waters east of Dalian New Port Anchorage has decreased significantly following the issuance of our earlier Circular in 2024. According to the latest on-site survey information, the scope of fishery farms in these waters has further expanded eastward and southward compared with previous records.

Based on the original fishery farm area as described in Circular PNI [2023] 04 (the red area shown in the figure below), the waters east and north of the line connecting the following four coordinates are additionally identified as fishery farms (the area marked

with blue diagonal lines, superseding the additional area specified in Circular PNI [2023] 09):

38°57.78'N, 122°02.52'E

38°53.51'N, 122°03.14'E

38°53.16'N, 122°04.19'E

39°01.03'N, 122°19.49'E

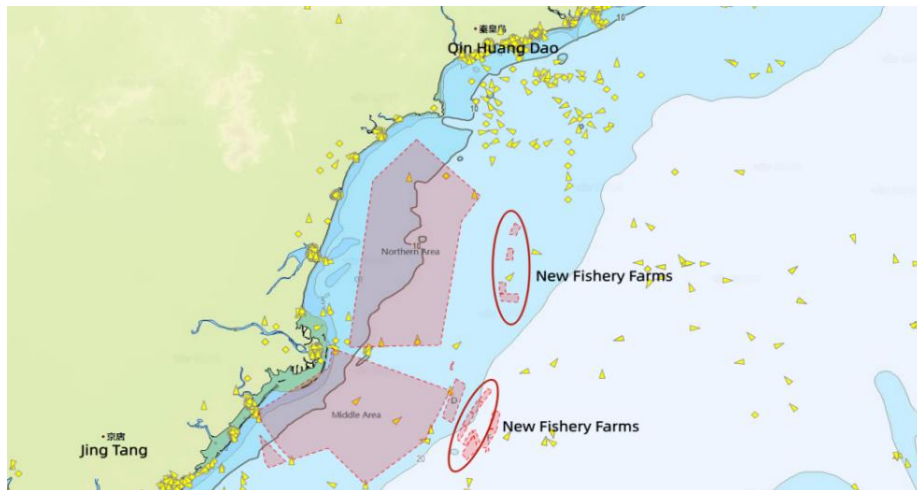


To further mitigate the risk of vessels straying into fishery farms, vessels calling at Dalian New Port are advised to:

- Avoid entering the anchorage directly from its eastern side;
- Refrain from anchoring or drifting in the waters east of the anchorage;
- Maintain a vigilant watch and continuously monitor the boundaries of fishery farms using navigational aids such as AIS and Radar (some operators have deployed AIS beacons to mark fishery farm boundaries);
- Reference should also be made to the other safety recommendations set out in Circulars PNI [2023] 04 and PNI [2023] 09.

Qinhuangdao

Based on case materials involving fishery farms recently handled by us and on-site verification information, we note that 11 new fishery farms (areas circled in red in the figure below) have been established in the waters between Qinhuangdao and Jingtang Port. Aquaculture facilities in these areas are densely distributed, posing a relatively high risk of contact. The boundary coordinates for these fishery farms are listed below:



Area 1:

39°17.534'N 119°35.310'E
 39°17.658'N 119°35.660'E
 39°16.517'N 119°36.134'E
 39°16.197'N 119°35.804'E

Area 2:

39°17.074'N 119°35.434'E
 39°15.785'N 119°35.959'E
 39°14.692'N 119°34.579'E
 39°15.304'N 119°34.074'E

Area 3:

39°17.630'N 119°35.258'E
 39°17.142'N 119°35.449'E
 39°16.037'N 119°34.625'E
 39°16.273'N 119°34.192'E

Area 4:

39°21.709'N 119°37.102'E
 39°21.514'N 119°37.635'E
 39°20.320'N 119°36.520'E
 39°20.566'N 119°36.116'E

Area 5:

39°20.638'N 119°36.021'E

39°20.286'N 119°36.530'E
39°19.150'N 119°35.500'E
39°19.534'N 119°35.052'E

Area 6:

39°19.500'N 119°34.996'E
39°19.160'N 119°35.482'E
39°17.912'N 119°34.687'E
39°18.216'N 119°34.169'E

Area 7:

39°18.206'N 119°34.172'E
39°17.898'N 119°34.674'E
39°16.561'N 119°33.809'E
39°16.831'N 119°33.407'E

Area 8:

39°35.540'N 119°39.535'E
39°35.510'N 119°40.133'E
39°34.381'N 119°40.030'E
39°34.417'N 119°39.234'E

Area 9:

39°32.210'N 119°38.487'E
39°32.210'N 119°39.193'E
39°31.117'N 119°39.198'E
39°31.113'N 119°38.503'E

Area 10:

39°31.085'N 119°38.518'E
39°31.089'N 119°40.655'E
39°30.216'N 119°40.697'E
39°30.363'N 119°38.750'E

Area 11:

39°37.984'N 119°40.280'E
39°37.721'N 119°40.898'E
39°36.787'N 119°40.416'E

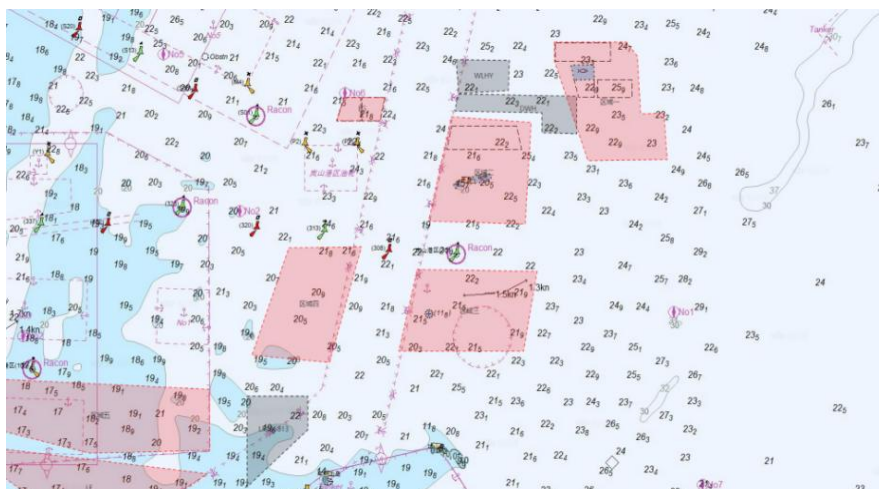
39°36.929'N 119°39.595'E

It is particularly noted that the layout and extent of the aforementioned fishery farms may change with seasonal production arrangements, farming plans, maritime approval adjustments, and local management requirements, resulting in considerable uncertainty. Vessels navigating between Tianjin, Huanghua, Jingtang Port and Qinhuangdao, Jinzhou Port are advised to:

- Maintain an adequate safe distance from the coast when planning routes, avoiding the densely distributed fishery farms listed above;
- Proceed at a safe speed when navigating in coastal waters, maintaining a proper lookout, and navigating with caution;
- Avoid anchoring or drifting in the vicinity of fishery farms to reduce the risk of contact;
- Monitor the latest notices issued by maritime safety administrations for updates on changes to fishery farm boundaries, and make appropriate route adjustments as necessary.

Rizhao & Lanshan

Three new offshore fishery farms (grey areas in the figure below) have been established in the Rizhao and Lanshan waters, with their respective boundaries enclosed by the lines connecting the coordinates listed below. Among them, the coordinates of Area 1 and Area 2 are derived from on-site surveys in the course of our case handling, while Area 3 is defined in accordance with Navigation Notice No. 813/25 issued by Shandong MSA.



Area 1:

35°10.835'N, 119°54.267'E

35°10.463'N, 119°54.205'E

35°10.412'N, 119°57.501'E

35°09.820'N, 119°57.501'E

35°09.795'N, 119°58.809'E

35°10.911'N, 119°58.819'E

35°10.971'N, 119°54.359'E

Area 2:

35°11.980'N, 119°54.252'E

35°10.995'N, 119°54.332'E

35°11.065'N, 119°56.233'E

35°11.962'N, 119°56.260'E

Area 3:

35°02.000'N, 119°46.300'E

35°02.000'N, 119°48.600'E

35°01.000'N, 119°48.600'E

34°59.300'N, 119°46.300'E

Given the geographical characteristics of these newly established fishery farms, the safety recommendations provided in our earlier Circulars PNI [2023] 04 and PNI [2023] 09 remain applicable for vessels when planning routes and navigating in these waters.

Lianyungang

Newly established fishery farms have been identified in the Lianyungang waters (the red area in the figure below), adjacent to the existing fishery farms in Lanshan. Some farmers in this area hold valid aquaculture certificates and real property ownership certificates, while a small number of unlicensed farming operations also exist. As a result, the precise boundaries of certain fishery farms in these waters have not yet been fully clarified. Based on our on-site survey findings, the main fishery farm area generally covers the enclosed waters bounded by the following 6 coordinates:

34°57.100'N, 119°51.525'E

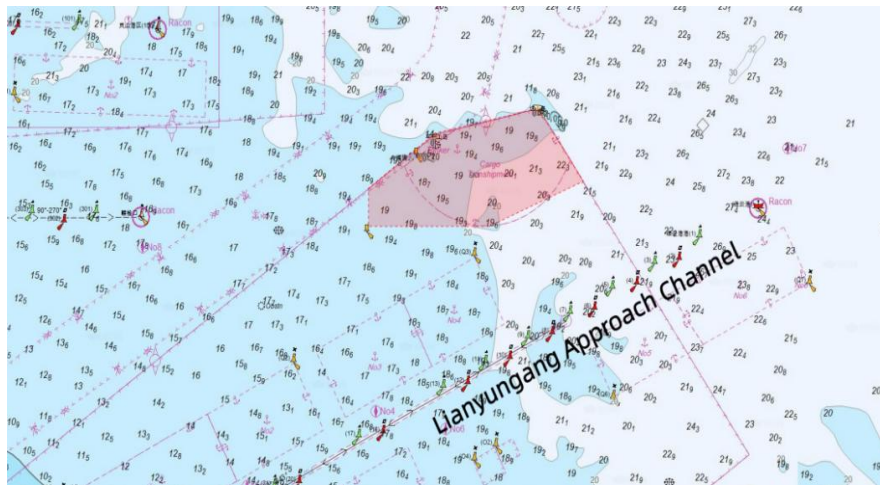
34°57.100'N, 119°46.650'E

34°58.200'N, 119°46.650'E

34°59.800'N, 119°49.350'E

35°00.500'N, 119°53.500'E

34°58.400'N, 119°55.330'E



Vessels entering and departing Lianyungang are advised to note the following:

- Exercise heightened vigilance when approaching Anchorages No. 3 and 4, paying close attention to surrounding aquaculture facilities;
- Obtain clearance from the VTS Centre before entering or leaving the anchorage, keeping as close as practicable to the fairway and well clear of fishery farms;
- Maintain a proper lookout and radar watch, remaining alert for unmarked small-scale aquaculture facilities to avoid the risk of contact.

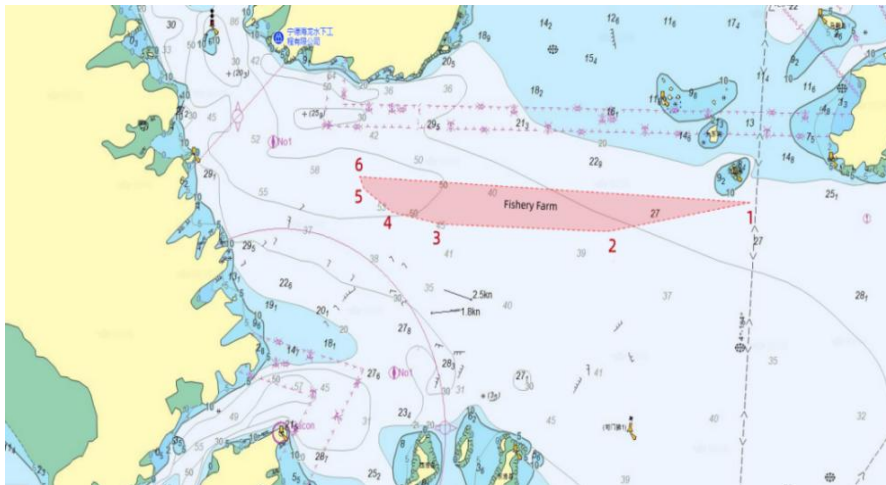
Ningde

Over the past two years, the approach waters of Sansha Bay, Ningde, have consistently been a high-risk area for maritime incidents involving fishery farms. When planning routes, vessels that lack awareness of the distribution of fishery farms are highly likely to plot their courses directly through such areas. The risk is particularly elevated at night or in conditions of restricted visibility, as identifying fishery farm boundaries becomes significantly more difficult, potentially leading to damage to fishing nets, economic claims, and navigation obstructions.

To enhance navigation safety, the Fuzhou Aids to Navigation Department established six virtual AIS beacons around this fishery farm in 2025. The sea area enclosed by the line connecting these beacons constitutes the fishery farm (the red area in the figure

below):

YANG ZHI QU 1: 26°29'06.1"N 119°59'42.6"E (MMSI:994126395)
YANG ZHI QU 2: 26°28'40.6"N 119°56'49.2"E (MMSI:994136550)
YANG ZHI QU 3: 26°28'47.2"N 119°53'24.2"E (MMSI:994126469)
YANG ZHI QU 4: 26°28'57.4"N 119°52'25.2"E (MMSI:994126467)
YANG ZHI QU 5: 26°29'18.4"N 119°51'51.5"E (MMSI:994126333)
YANG ZHI QU 6: 26°29'28.9"N 119°51'45.8"E (MMSI:994126350)



Vessels entering and departing Sansha Bay are recommended to:

- Mark this fishery farm on nautical charts and avoid the area enclosed by the beacons when planning routes;
- Keep the AIS activated and continuously monitored while navigating, promptly identify the AIS beacons, and proceed with caution through the approach waters of Sansha Bay;
- In conditions of restricted visibility, such as at night or in fog, enhance lookout and observation. Anchor in a safe area if necessary to ensure navigational safety;
- Contact local agents in advance to obtain the latest information on the distribution of fishery farms.

For any related questions, please feel free to contact Huatai Beijing (pni.bj@huatai-serv.com) or our local branch offices.